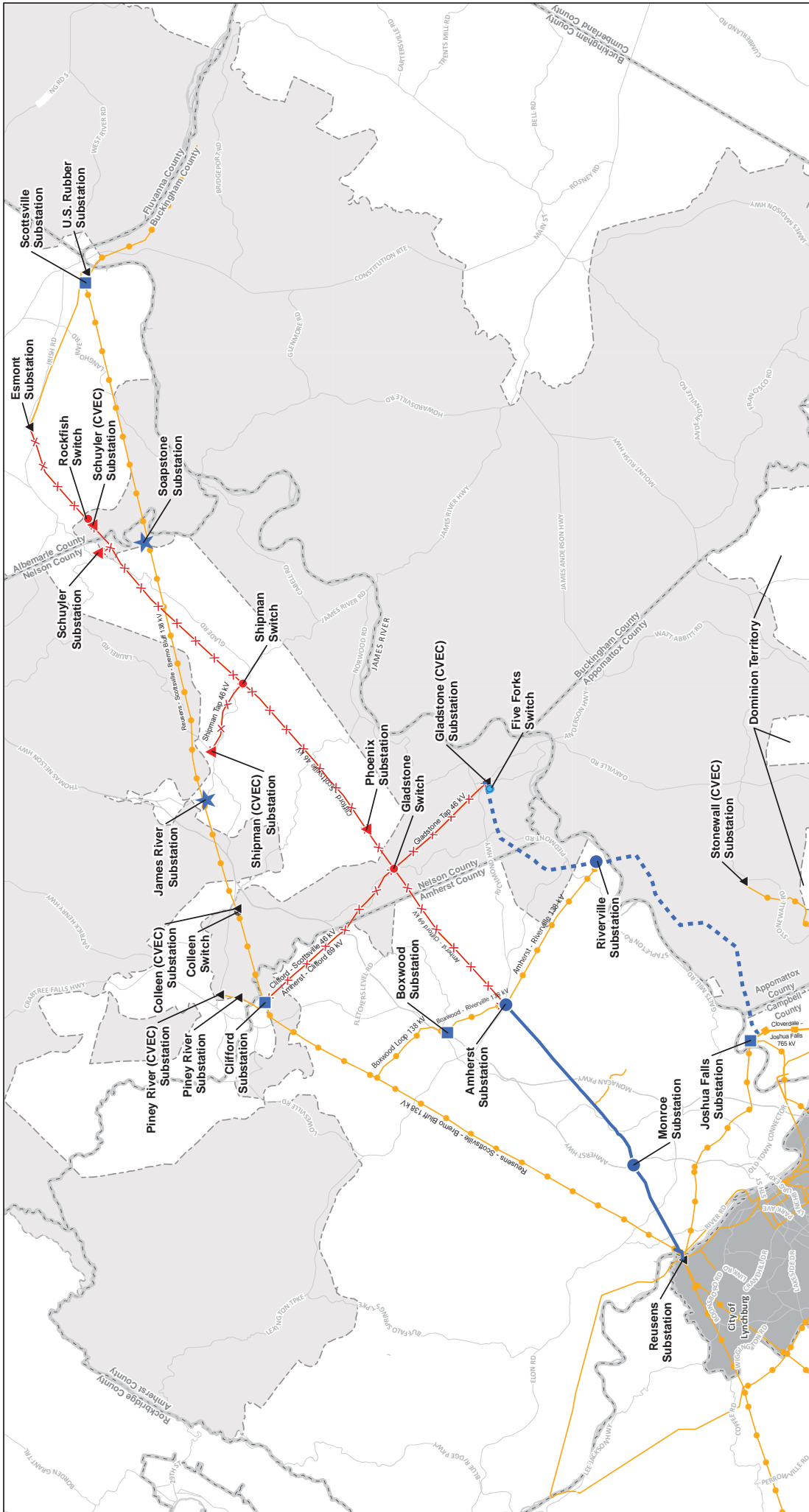

Attachment A: Project Maps



NAD1983 StatePlane Virginia South FIPS 4502 Feet
 Foot US
 Lambert Conformal Conic
 North American 1983

0 3.5 7
 Miles

1" = 3.5 miles

Page 1 of 1

Project Components Subject to SCC Approval

- New 138 kV Substation
- New Switch
- Existing Substation to be Expanded
- Existing Substation to be Upgraded (Associated Substation Improvements - Inside the Fence)
- New 138 kV Transmission Lines
- Rebuild Existing 69 kV Line

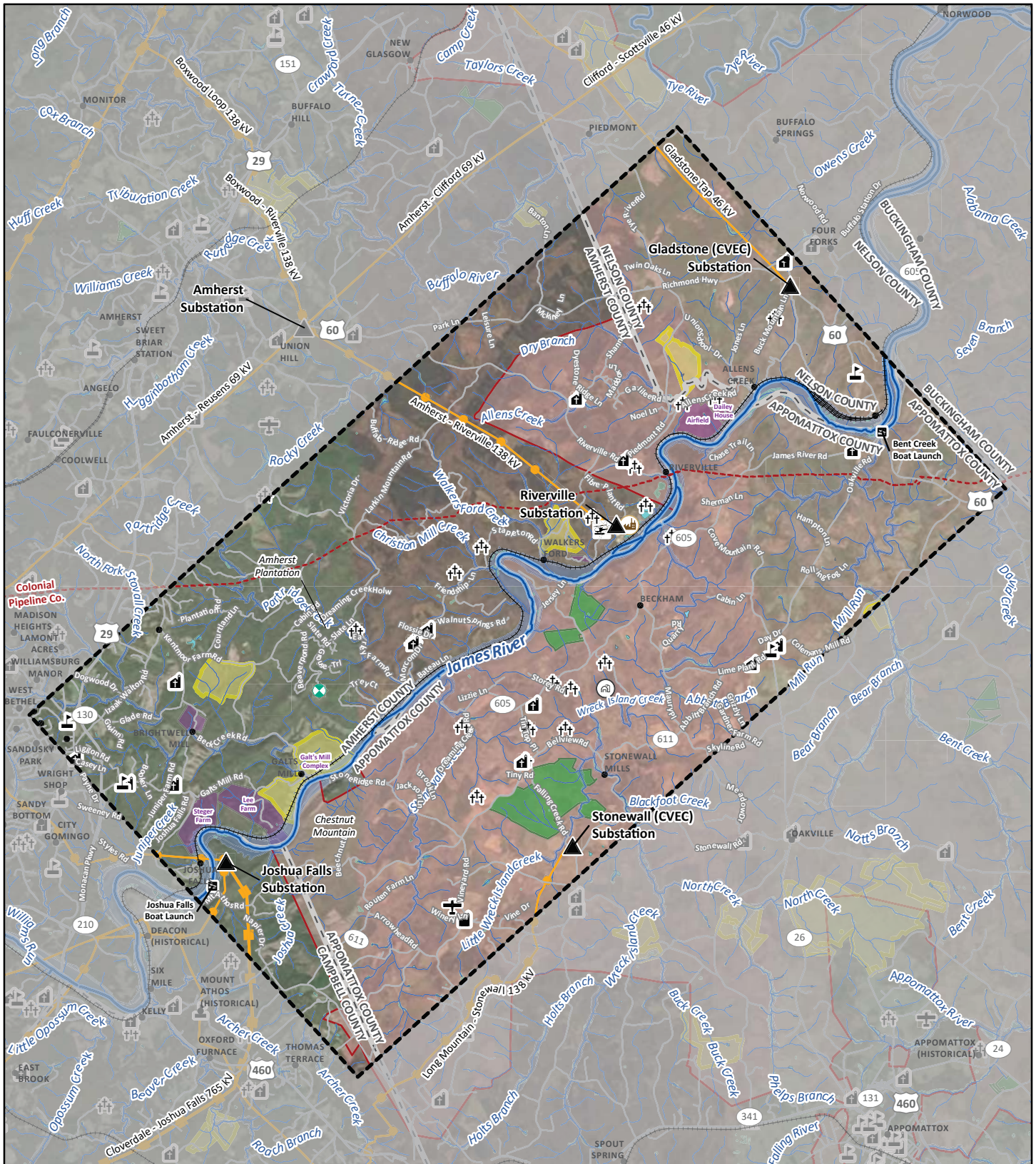
Existing 46kV System to be Retired:

- Existing Switch to be Retired
- Existing Substation to be Retired
- Existing Line to be Removed (Right-of-way will be retained)
- *Not seeking SCC Approval

Legend:

- Existing Substation
- Existing Switch
- Existing AEP Transmission Line (69 kV or lower)
- Existing AEP Transmission Line (115-230 kV)
- Existing AEP Transmission Line (345 kV +)
- Road/Highway
- County Boundary
- City of Lynchburg
- CVEC Territory
- AFCo Territory, unless otherwise noted

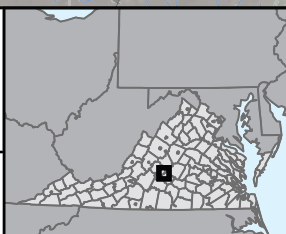




- Study Area
- Existing Substation
- Greif Paper Mill
- Boat Launch
- Virginia Century Farm (VDCAS)
- Communication Tower
- Populated Place
- School
- Place of Worship
- Cemetery
- Private Airstrip
- Heliport
- Road
- Pipeline
- Railroad
- James River
- Existing AEP Transmission Line (69 kv or lower)
- Existing AEP Transmission Line (115-230 kv)
- Existing AEP Transmission Line (345 kv +)
- County Boundary
- Stream (NHD)
- NWI Wetland
- Lake/Pond (NHD)
- Reservoir (NHD)
- Floodplain
- DOF Easement
- VOF Easement
- Architectural Resource (VCRIS)
- CVEC Service Territory

Amherst, Appomattox,
Campbell, and Nelson Counties
Virginia

NAD 1983 HARN State Plane
Virginia South FIPS 4502 Feet
Lambert Conformal Conic

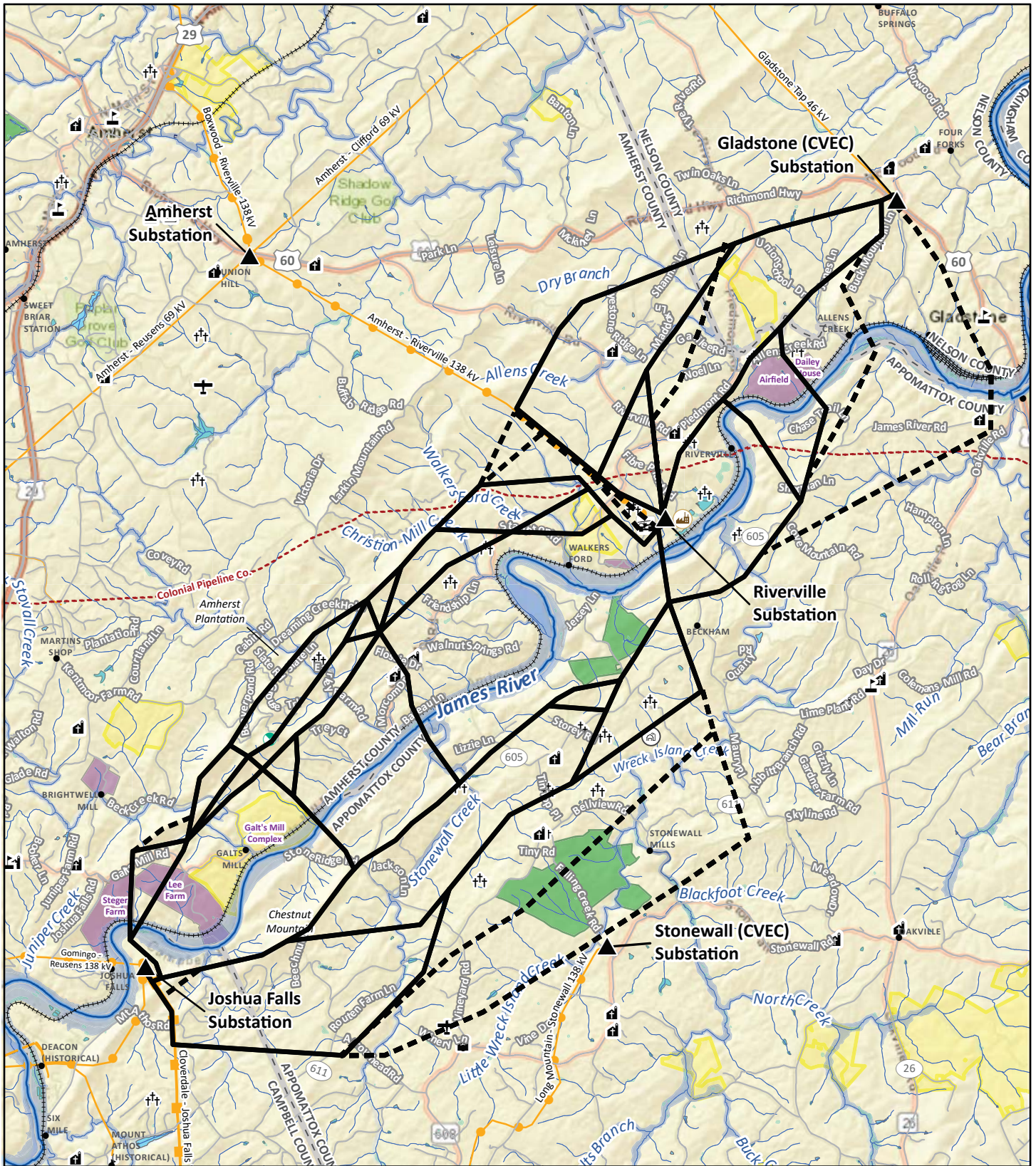


Map 2 Study Area

Joshua Falls-Riverville-Gladstone 138 kv
Transmission Lines Component

**Central Virginia Transmission
Reliability Project**

0 1 2 3
Miles

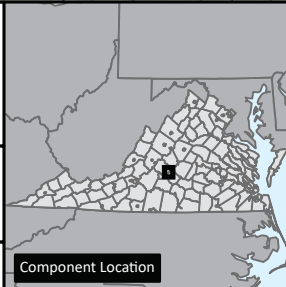


- ▲ Existing Substation
- 138 kV Study Segment
- Dismissed Study Segment
- Ⓜ Greif Paper Mill
- Ⓜ Communication Tower
- Populated Place
- Ⓜ School
- Ⓜ Virginia Century Farm (VDACS)
- Ⓜ Place of Worship
- Ⓜ Cemetery
- Ⓜ Private Airstrip
- Ⓜ Heliport
- Road
- Pipeline
- +++ Railroad
- James River
- Existing AEP Transmission Line (69 kV or lower)
- Existing AEP Transmission Line (115-230 kV)
- Existing AEP Transmission Line (345 kV+)
- County Boundary
- Stream (NHD)
- NWI Wetland
- Lake/Pond (NHD)
- Reservoir (NHD)
- Floodplain
- DOF Easement
- VOF Easement
- Architectural Resource (VCRIS)

Amherst, Appomattox,
Campbell, and Nelson Counties
Virginia

NAD 1983 HARN State Plane
Virginia South FIPS 4502 Feet
Lambert Conformal Conic

December 11, 2020



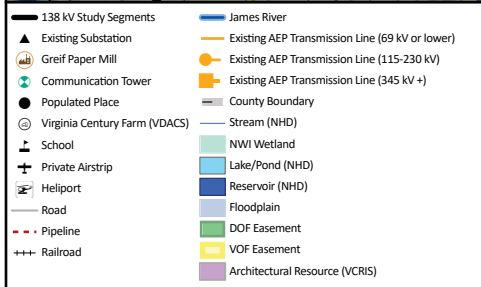
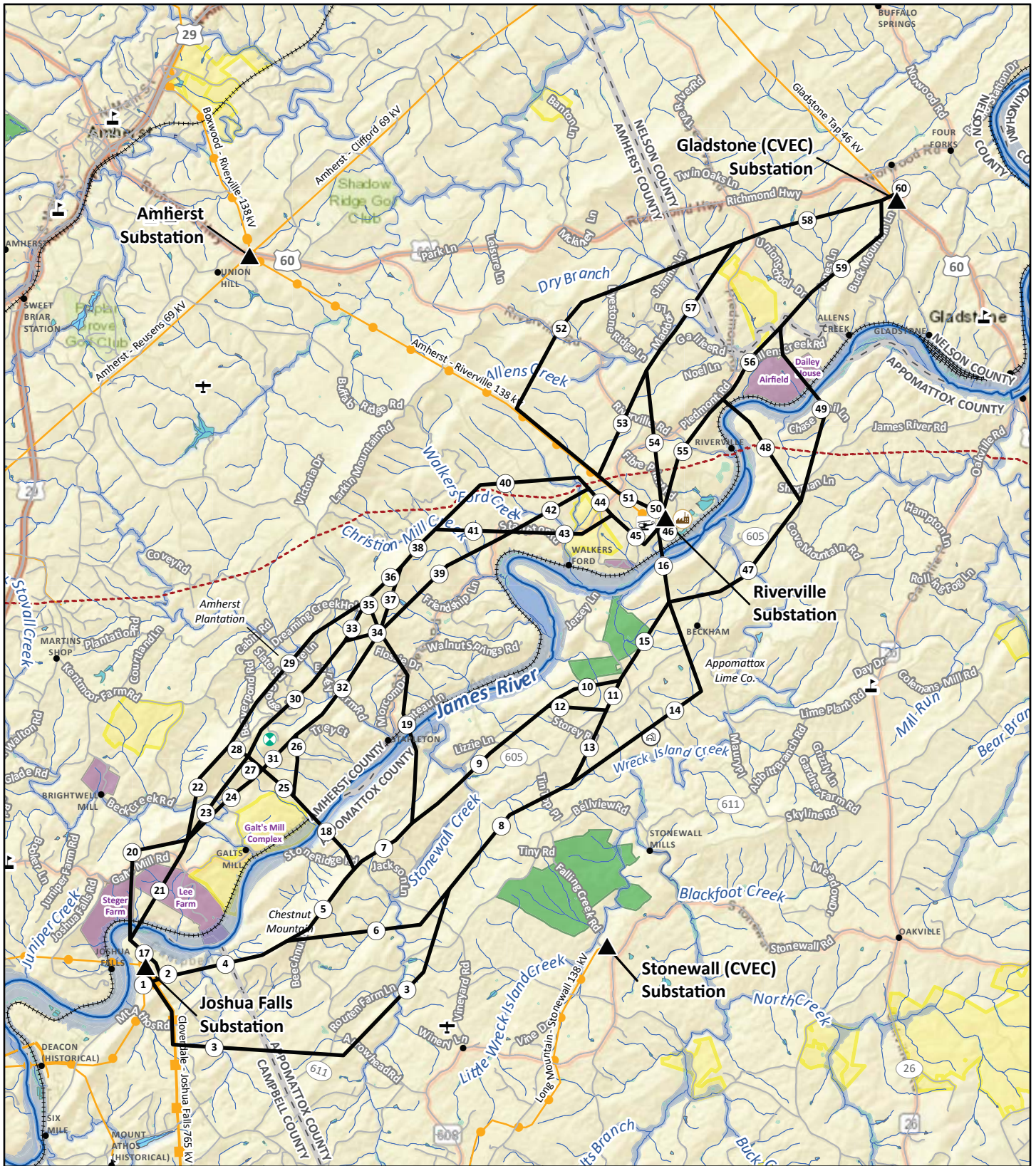
Map 3

Routing Concepts

Joshua Falls-Riverville-Gladstone 138 kV
Transmission Lines Component

**Central Virginia Transmission
Reliability Project**

0 1 2 3
Miles



Amherst, Appomattox,
Campbell, and Nelson Counties
Virginia

NAD 1983 HARN State Plane
Virginia South FIPS 4502 Feet
Lambert Conformal Conic

December 11, 2020

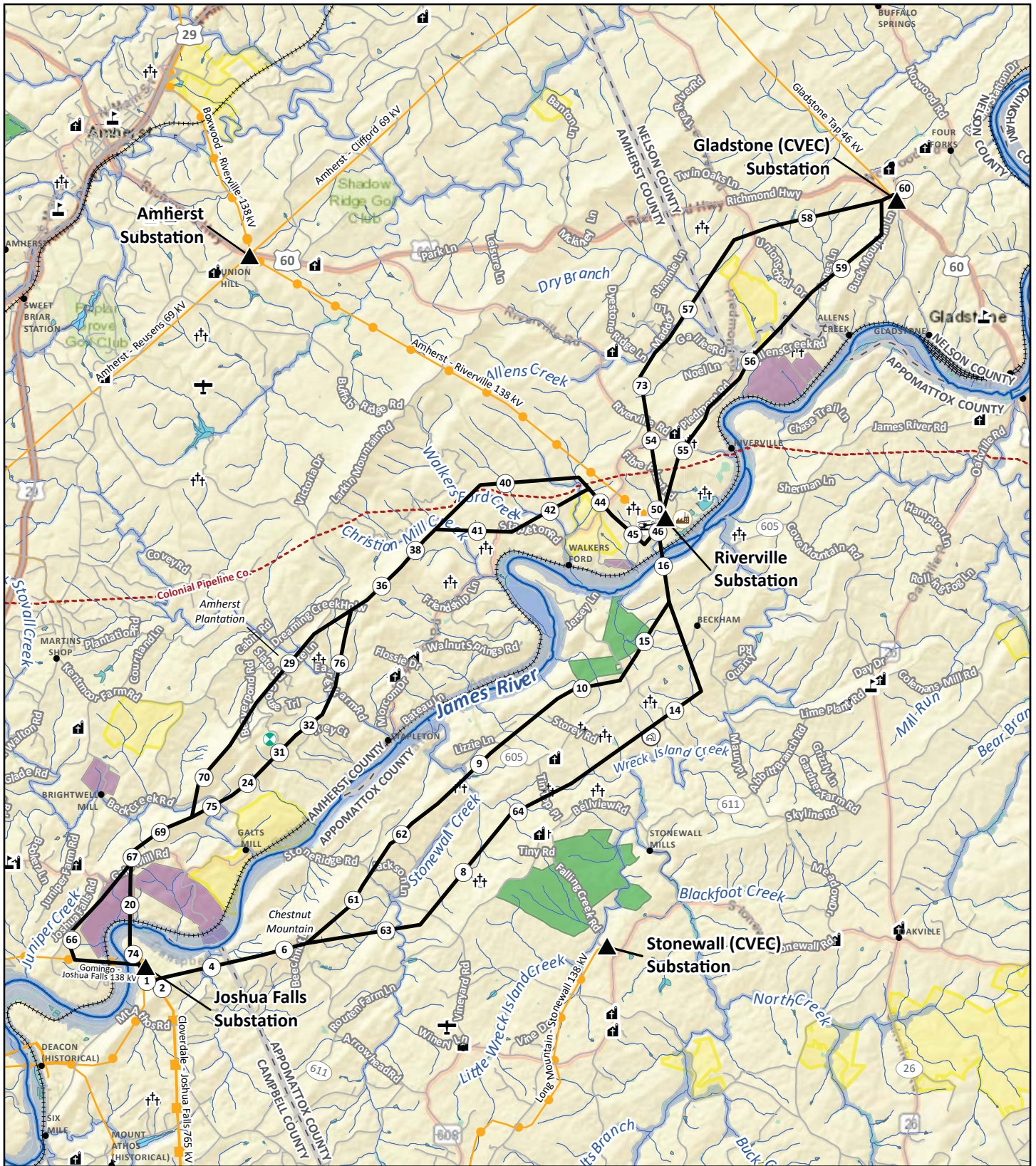


Map 4
Study Segment Network
(November 2019 Open House)
Joshua Falls-Riverville-Gladstone 138 kV
Transmission Lines Component

APPALACHIAN POWER
www.appalachianpower.com

Central Virginia Transmission Reliability Project

0 1 2 3
Miles



- ▲ Existing Substation
- 138 kV Study Segments
- ⊗ Greif Paper Mill
- ⊕ Communication Tower
- Populated Place
- ⊙ Virginia Century Farm (VDACS)
- ⊙ School
- ⊙ Place of Worship
- ⊙ Cemetery
- ✈ Private Airstrip
- ✈ Heliport
- Road
- - - Pipeline
- +++ Railroad
- James River
- Existing AEP Transmission Line (69 kV or lower)
- Existing AEP Transmission Line (115-230 kV)
- Existing AEP Transmission Line (345 kV +)
- County Boundary
- Stream (NHD)
- NWI Wetland
- Lake/Pond (NHD)
- Reservoir (NHD)
- Floodplain
- DOF Easement
- VOF Easement
- Architectural Resource (VCRIS)

Amherst, Appomattox,
Campbell, and Nelson Counties
Virginia

NAD 1983 HARN State Plane
Virginia South FIPS 4502 Feet
Lambert Conformal Conic

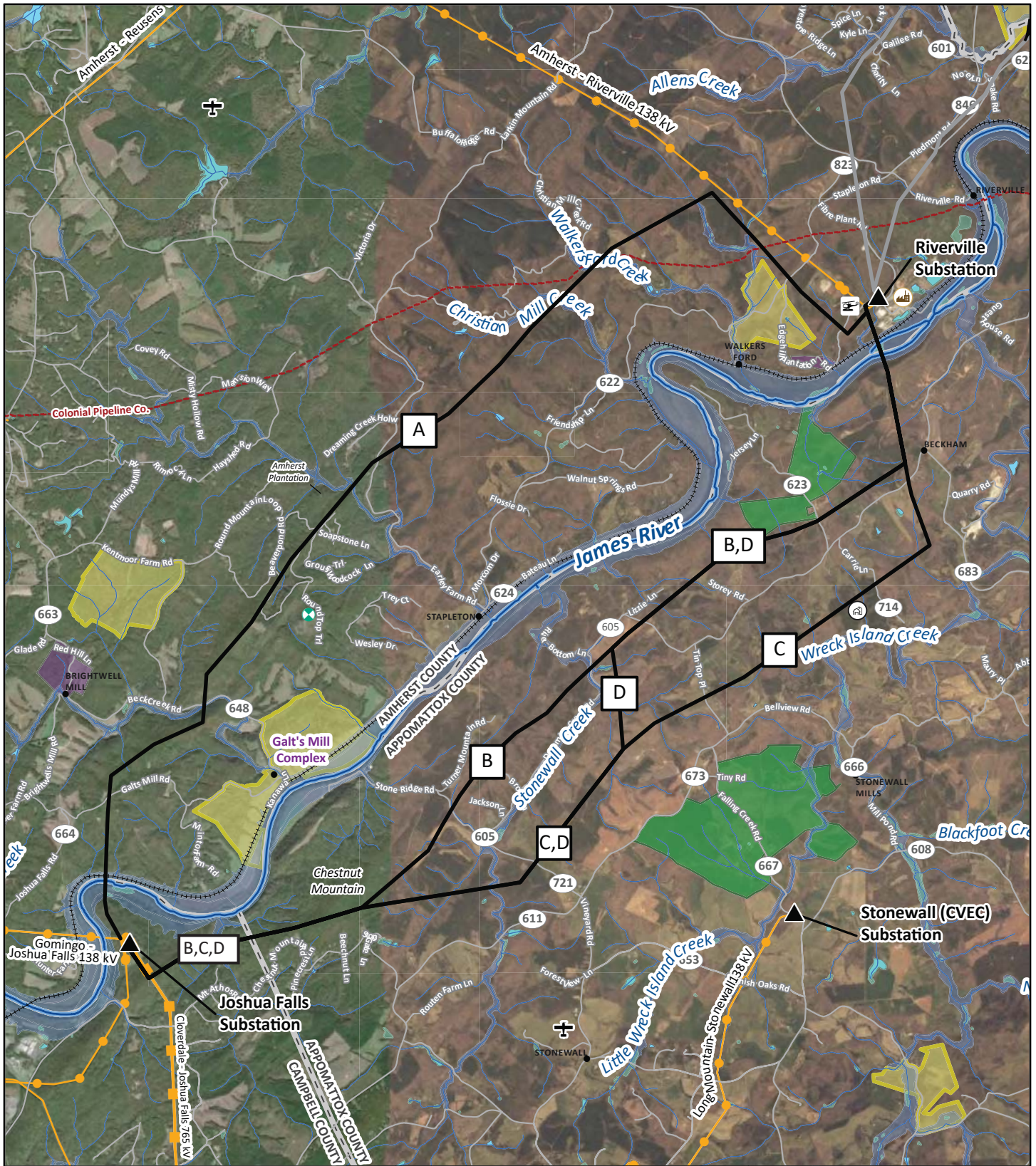
December 11, 2020



Map 5
Refined Study Segment Network
(February 2020 Open House)
Joshua Falls-Riverville-Gladstone 138 kV
Transmission Lines Component

Central Virginia Transmission
Reliability Project

0 1 2 3
Miles

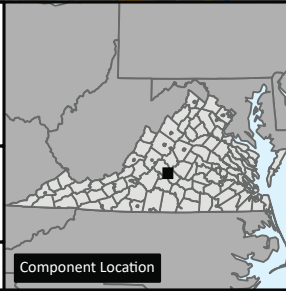


- ▲ Existing Substation
- 138 kV Alternative Routes
- Other Alternative Routes
- ⊕ Greif Paper Mill
- ⊕ Communication Tower
- Populated Place
- ⊕ Virginia Century Farm (VDACS)
- ⊕ Private Airstrip
- ⊕ Heliport
- Pipeline
- +++ Railroad
- Road
- Existing AEP Transmission Line (69 kV or lower)
- Existing AEP Transmission Line (115-230 kV)
- Existing AEP Transmission Line (345 kV +)
- County Boundary
- Stream (NHD)
- NWI Wetland
- Lake/Pond (NHD)
- Floodplain
- DOF Easement
- VOF Easement
- NRHP Listed Architectural Resources

Amherst, Appomattox,
Campbell, and Nelson Counties
Virginia

NAD 1983 HARN State Plane
Virginia South FIPS 4502 Feet
Lambert Conformal Conic

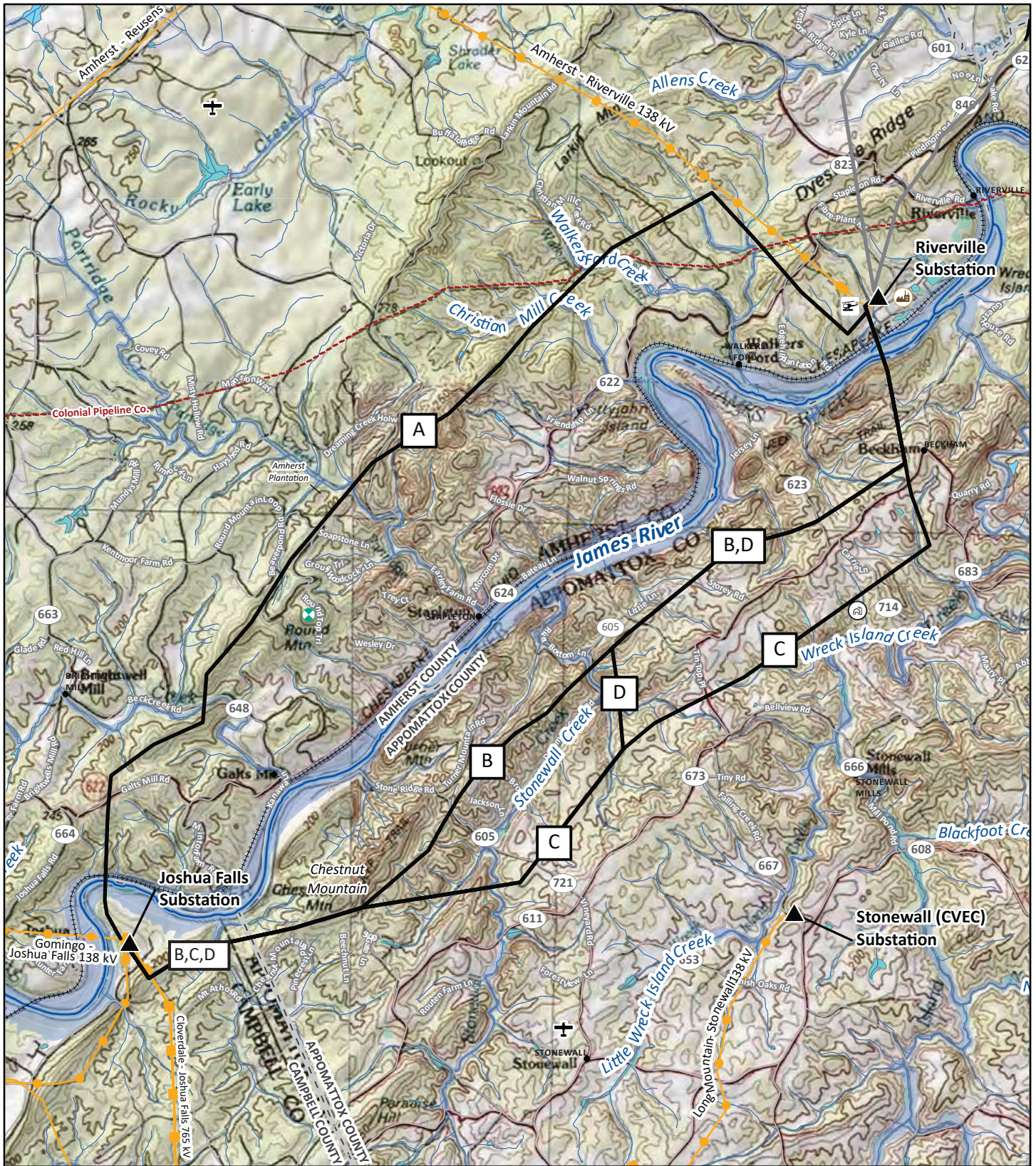
December 21, 2020



Map 6
Joshua Falls-Riverville 138 kV
Alternative Routes
 Joshua Falls-Riverville-Gladstone 138 kV
 Transmission Lines Component

APPALACHIAN POWER
 Central Virginia Transmission
 Reliability Project

0 1 2
 Miles

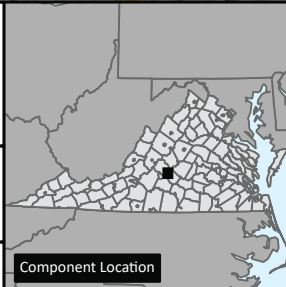


- ▲ Existing Substation
- 138 kV Alternative Routes
- Other Alternative Routes
- Other Alternative Routes
- Existing AEP Transmission Line (69 kv or lower)
- Existing AEP Transmission Line (115-230 kv)
- Existing AEP Transmission Line (345 kv +)
- ⊙ Greif Paper Mill
- ⊙ Communication Tower
- Populated Place
- ⊙ Virginia Century Farm (VDCAS)
- ⊕ Private Airstrip
- ⊕ Heliport
- Pipeline
- ++++ Railroad
- James River
- Road
- Stream (NHD)
- NWI Wetland
- Lake/Pond (NHD)
- Floodplain
- County Boundary

Amherst, Appomattox,
Campbell, and Nelson Counties
Virginia

NAD 1983 HARN State Plane
Virginia South FIPS 4502 Feet
Lambert Conformal Conic

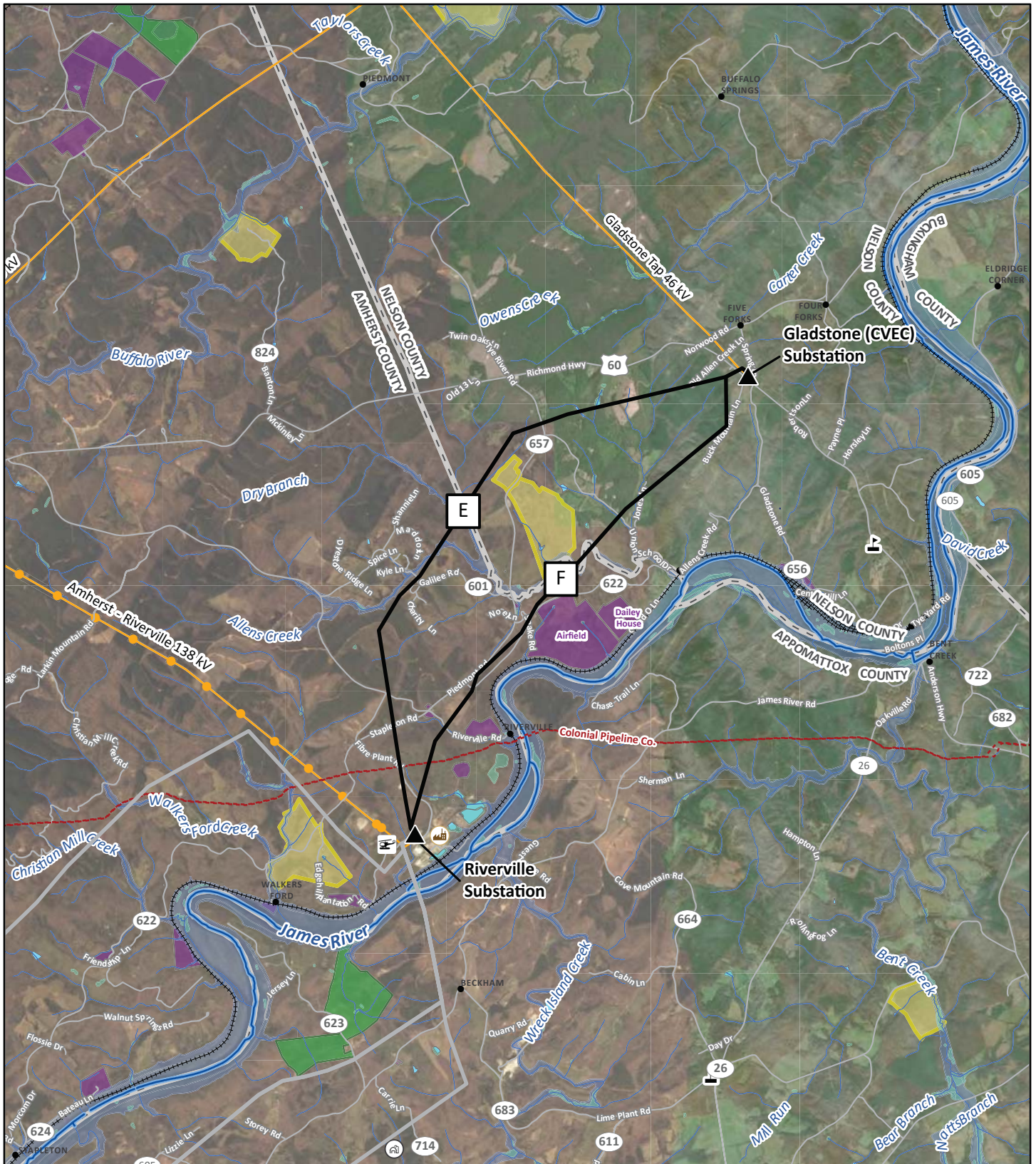
December 21, 2020



Map 7
Joshua Falls-Riverville 138 kv
Alternative Routes
Joshua Falls-Riverville-Gladstone 138 kv
Transmission Lines Component

APPALACHIAN POWER
Central Virginia Transmission
Reliability Project

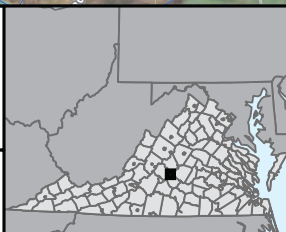
0 1 2
Miles



- ▲ Existing Substation
- 138 kV Alternative Routes
- Other Alternative Routes
- 🏭 Greif Paper Mill
- Pipeline
- +++ Railroad
- 🌊 James River
- Populated Place
- ⊙ Virginia Century Farm (VDACS)
- 🎓 School
- 🚑 Helipoint
- Road
- Existing AEP Transmission Line (69 kV or lower)
- Existing AEP Transmission Line (115-230 kV)
- County Boundary
- Stream (NHD)
- NWI Wetland
- Lake/Pond (NHD)
- Reservoir (NHD)
- Floodplain
- DOF Easement
- VOF Easement
- Architectural Resource (VGIS)

Amherst, Appomattox,
Campbell, and Nelson Counties
Virginia

NAD 1983 HARN State Plane
Virginia South FIPS 4502 Feet
Lambert Conformal Conic



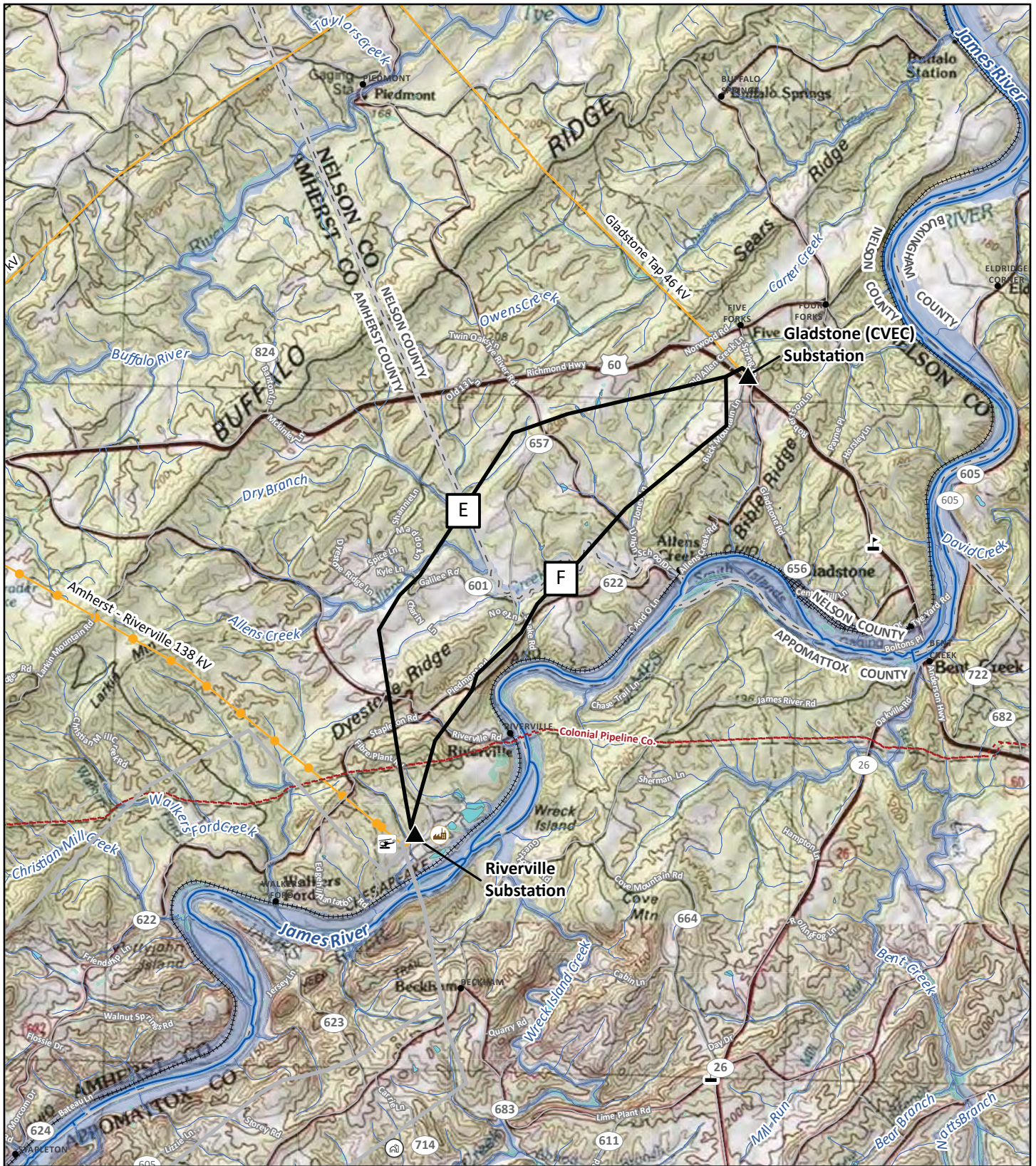
Map 8
Gladstone-Riverville 138 kV
Alternative Routes
Joshua Falls-Riverville-Gladstone 138 kV
Transmission Lines Component

**Central Virginia Transmission
Reliability Project**

0 1 2
Miles

December 11, 2020

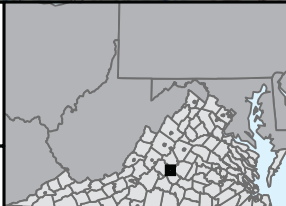
Component Location



- ▲ Existing Substation
- 138 kV Alternative Routes
- Other Alternative Routes
- Greif Paper Mill
- Populated Place
- ⊙ Virginia Century Farm (VDACS)
- ⚡ School
- ✈ Heliport
- +++ Railroad
- Pipeline
- Road
- Existing AEP Transmission Line (69 kv or lower)
- Existing AEP Transmission Line (115-230 kv)
- County Boundary
- Stream (NHD)
- NWI Wetland
- Lake/Pond (NHD)
- Reservoir (NHD)
- Floodplain

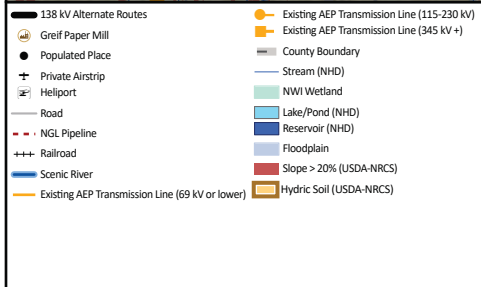
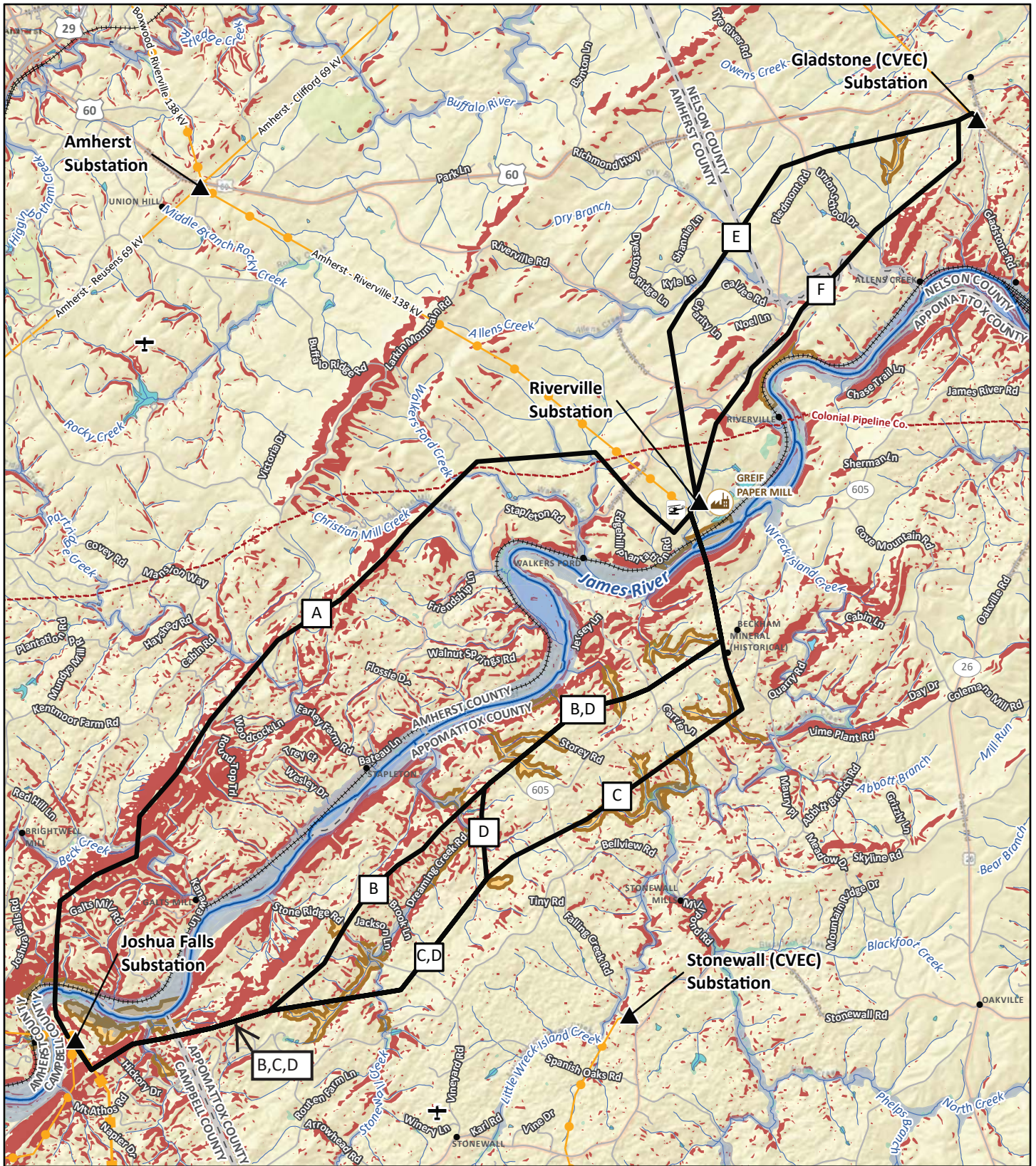
Amherst, Appomattox,
Campbell, and Nelson Counties
Virginia

NAD 1983 HARN State Plane
Virginia South FIPS 4502 Feet
Lambert Conformal Conic



Map 9
Gladstone-Riverville 138 kV
Alternative Routes
Joshua Falls-Riverville-Gladstone 138 kV
Transmission Lines Component





Amherst, Appomattox,
Campbell, and Nelson Counties
Virginia

NAD 1983 HARN State Plane
Virginia South FIPS 4502 Feet
Lambert Conformal Conic

December 21, 2020



Map 10
Geological, Soil, and Water Resources
Joshua Falls-Riverville-Gladstone 138 kV
Transmission Lines Component

Central Virginia Transmission
Reliability Project

0 1 2
Miles